

# The Template Designer

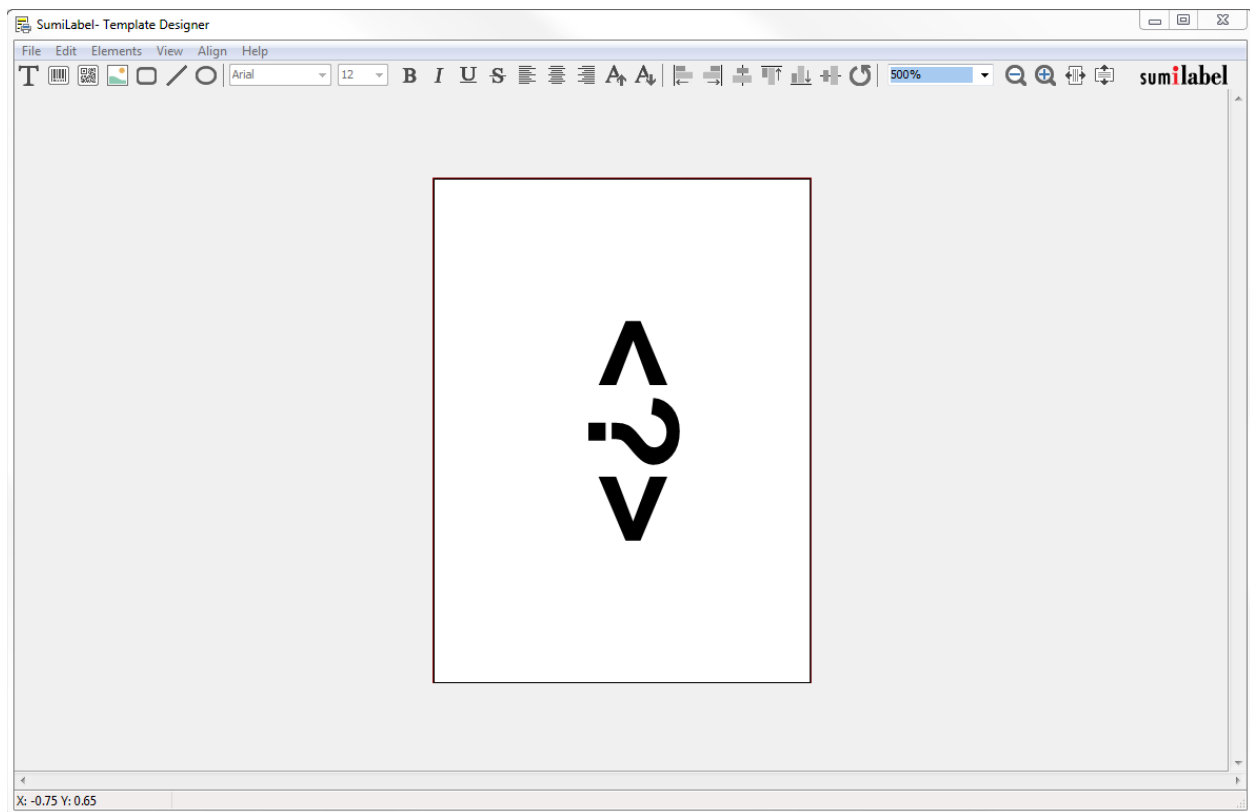
---

*See the pattern?*

Templates can be used to rapidly produce markers that vary on a particular theme. Whether the markers are text-only or include graphics, templates help you to be efficient and productive.

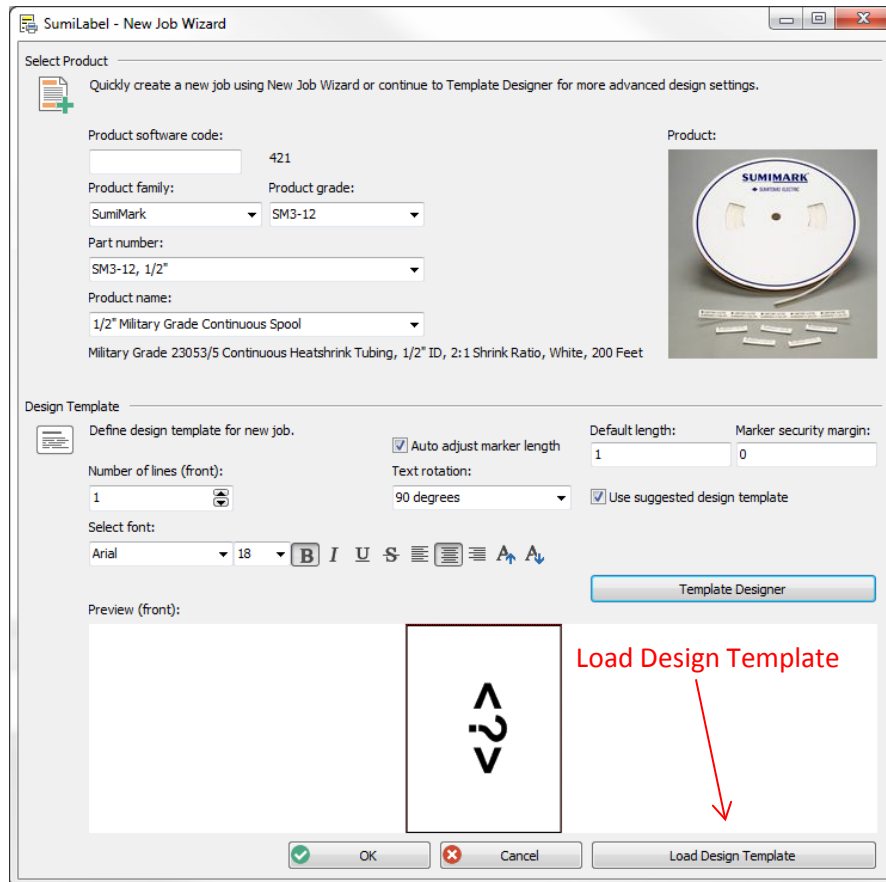
## Opening the Template Designer:

- From the Sumilabel – Explorer screen, begin the process to create a new set.
- In the Design Template section modify the number of text lines, font, font size, marker length, and other aspects as desired, then click the Template Designer button.



In the Template Designer, each individual piece of the marker is treated as a unique element. In the top left of the Template Designer, you can see all of the elements available to add, including graphics, barcodes, and simple shapes. Hovering over an element on the marker will reveal the bounding box for it; left-clicking will select it, revealing anchor points that can be used to resize or rotate the element. Right-clicking on a selected element will reveal a context menu, from which you can open that element's properties. The Properties window for any element makes every aspect of that element available to you, from the content itself to the size and rotation.

- Add/modify elements as desired, using the drag-and-drop functionality of the Template Designer in combination with the Properties window for each element.
- Once your template is complete, navigate to File->Save (or Save As) to save this template for future use.
  - *Please note: Templates should only be used for another job of the same type and size of tubing for which they were created.*
- Click Apply to save the changes to the job, then click OK in the New Job Wizard to proceed with creating your markers.



- To load a previously designed template from the New Job Wizard, click the Load Design Template button, then navigate to the desired template and open it.

**If you have any questions, comments, or concerns, please don't hesitate to contact Identification Technical Support:**

- Phone : +1 (760) 761-0600 x255
- E-mail : [sumimark@seipusa.com](mailto:sumimark@seipusa.com)
- [sumitomo.freshdesk.com](http://sumitomo.freshdesk.com) (For Live Chat and Self-Support)